

# MOSS

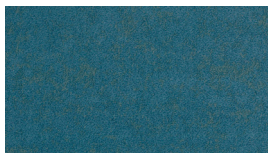


create rich textural and visual  
experiences for a truly signature space

**innovation & inspiration**

| *Signature*<sup>®</sup>  
floorconcepts

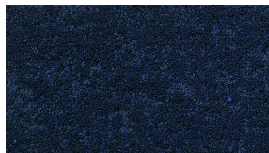
# MOSS



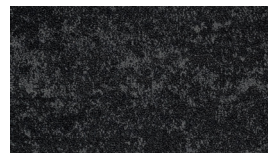
**MOSS aqua 3193**



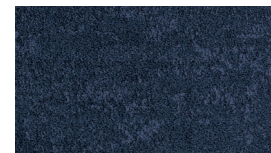
**MOSS wine 8561**



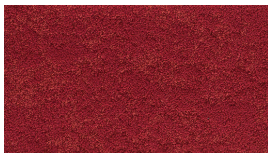
**MOSS navy 6740**



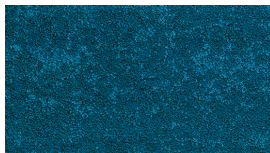
**MOSS henna 1675**



**MOSS whale 7112**



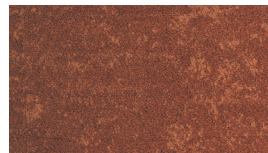
**MOSS red 3586**



**MOSS teal 2131**



**MOSS smokey 7578**



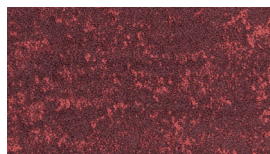
**MOSS duck 5456**



**MOSS orange 5324**



**MOSS sea 3936**



**MOSS maroon 2359**



**MOSS wolf 0098**



**MOSS yellow 4282**



**MOSS blue 3704**



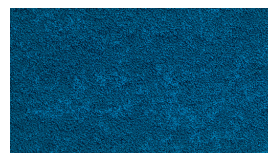
**MOSS goose 9897**



**MOSS caramel 0905**



**MOSS green 0244**



**MOSS sky 7352**



**MOSS tan 0507**

**product construction**  
**yarn/fibre**  
**pile weight**  
**pile height**  
**gauge**  
**plank size**  
**total thickness**  
**carton size**  
**total weight**  
**dimensional stability**  
**backing**  
**electrostatic propensity**

moss  
 multi-level loop  
 Antron Legacy®  
 1090g/m<sup>2</sup>  
 5.5mm  
 1/10  
 250mm x 1000mm  
 8.5mm  
 4sqm  
 6.0g/m<sup>2</sup>  
 <0.15%  
 Thermo Bak™  
 <3.0kv

**fire rating ISO 9239.1**  
**recommended adhesive**  
**installation method**

**Comfi Bak®**  
**vivid 101 custom shapes**

**GreenStar**  
**co-ordinates with availability**

>4.5 kw/m<sup>2</sup> critical radiant flux  
 RLA Polymers GS300  
 ashlar, brick, herringbone

100m<sup>2</sup> min  
 100m<sup>2</sup> min  
 100m<sup>2</sup> min

89% GreenStar points  
 botanica & pure planks  
 in stock



**Declare.**

*Signature*<sup>®</sup>  
 floorconcepts

au 03 9401 0888  
 nz 0800 150 555  
[signaturefloors.com.au](http://signaturefloors.com.au)  
[signaturefloors.co.nz](http://signaturefloors.co.nz)